



Caliper
LifeSciences
Working Innovation



LabChip 90 Data Viewer Software

LC90 Data Viewer Software

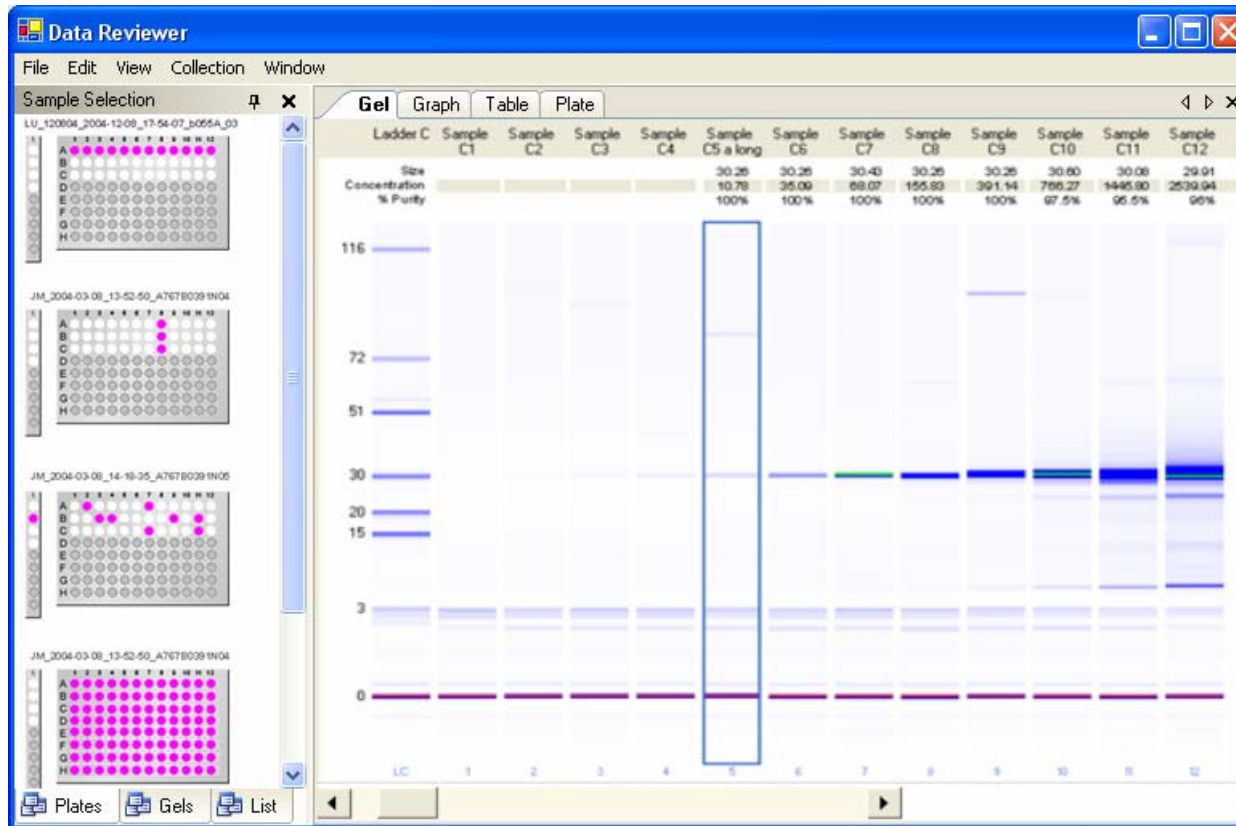
Benefits:

- Allow ease in manipulating and comparing data quantitatively from multiple runs
- Separate package from LabChip HT data acquisition software to allow flexibility in data analysis beyond LC90 computer to user's desktop
- No additional database licensing needed

Workflow:

- User imports LabChip HT files into the Data Viewer workspace
- Data is added from the workspace into a viewing collection manually or automatically using basic sorting options such as well number, sample name, EP/EF, size or concentration range, column format reorder, etc.
- Collections can be viewed in egram, result table, gel or plate formats
- Collections can be saved and exported

Data Viewer Features



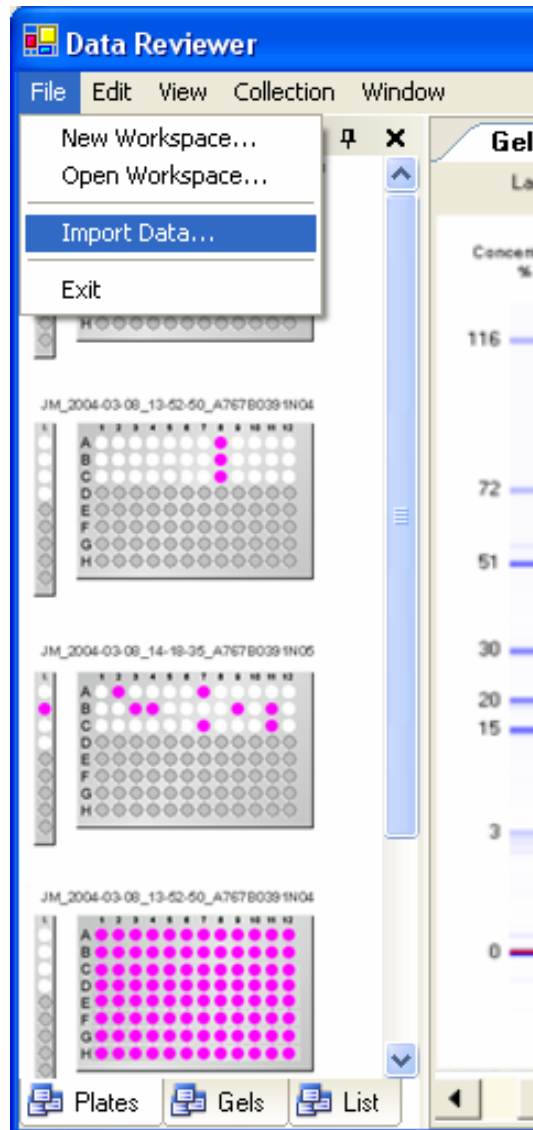
Workspace

Collection

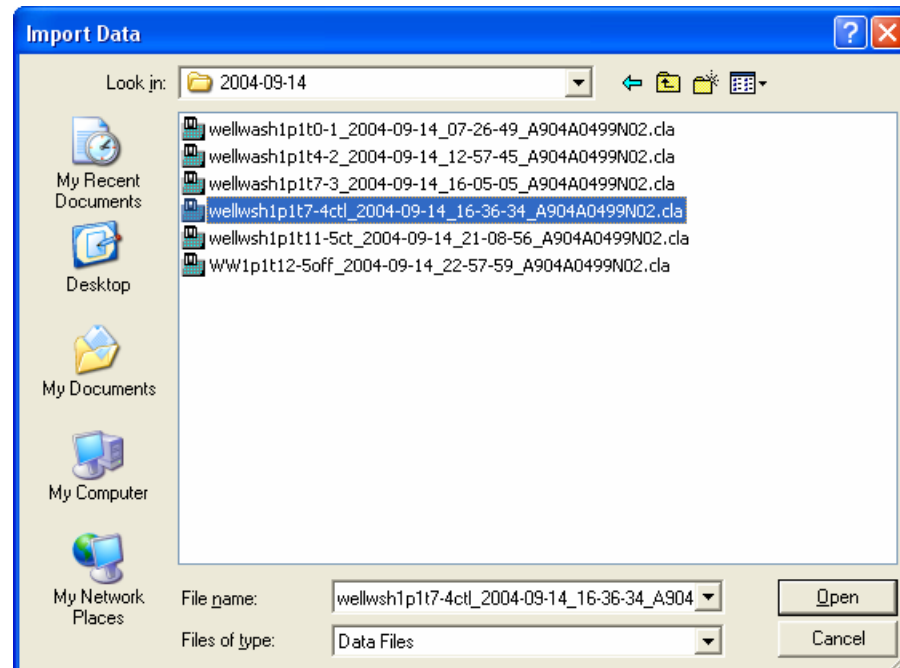
All runs to be analyzed

Samples selected from workspace

Data Viewer Features: Import Data Files



Import all data files into the workspace for analysis



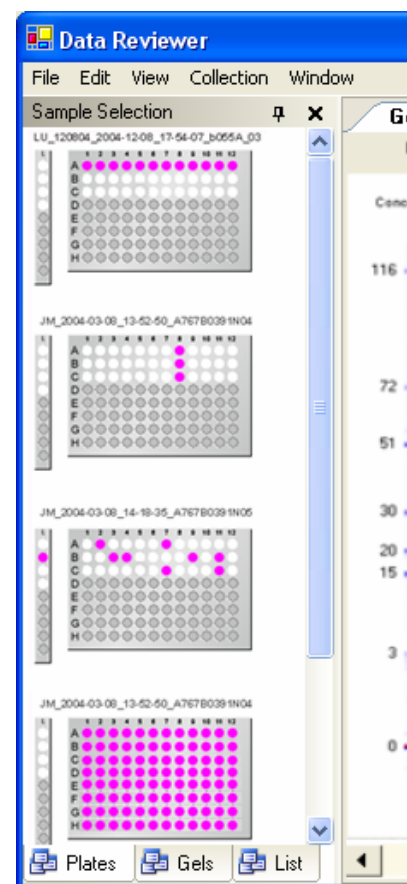
Data Viewer Features: Sample selection

Manual Selection

- Entire plate
- Row
- Column
- Individual samples

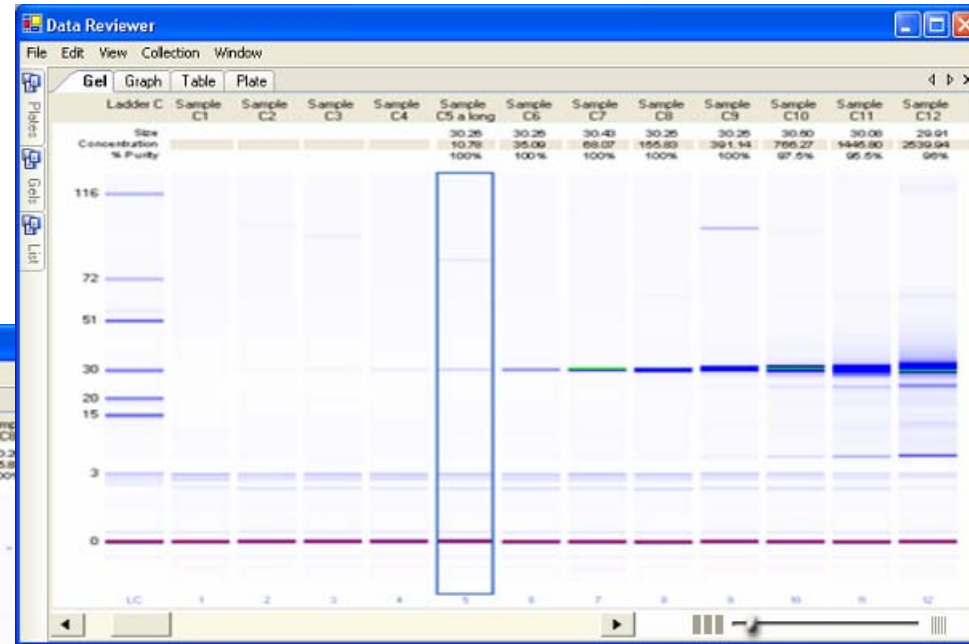
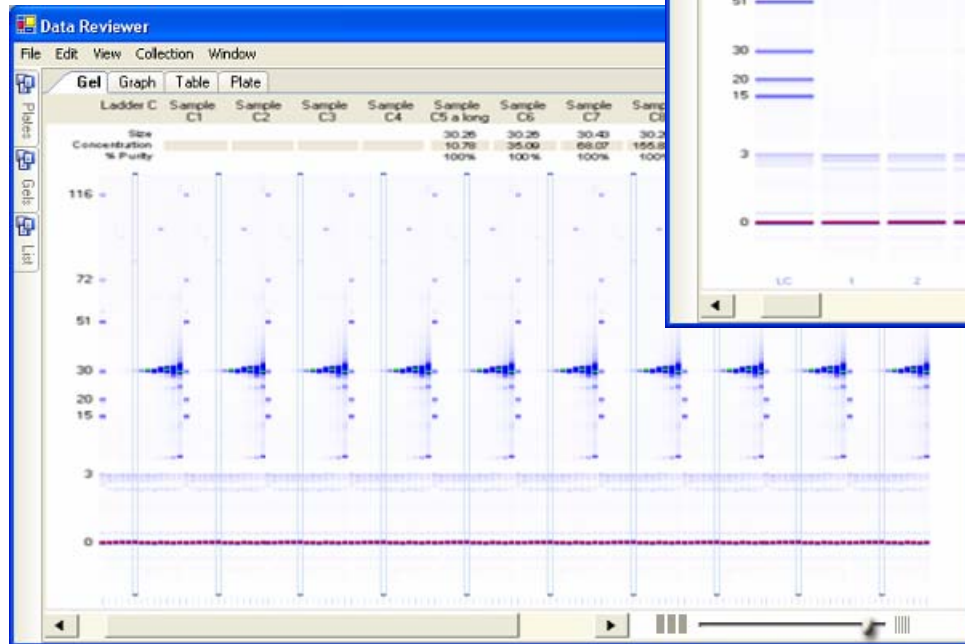
Automatic Selection - Enter criteria for selection such as:

- Sizing or Concentration
- Sample Name or Well #
- EP/EF



Data Viewer Features: Gel Collection

View the entire collection in one aligned gel

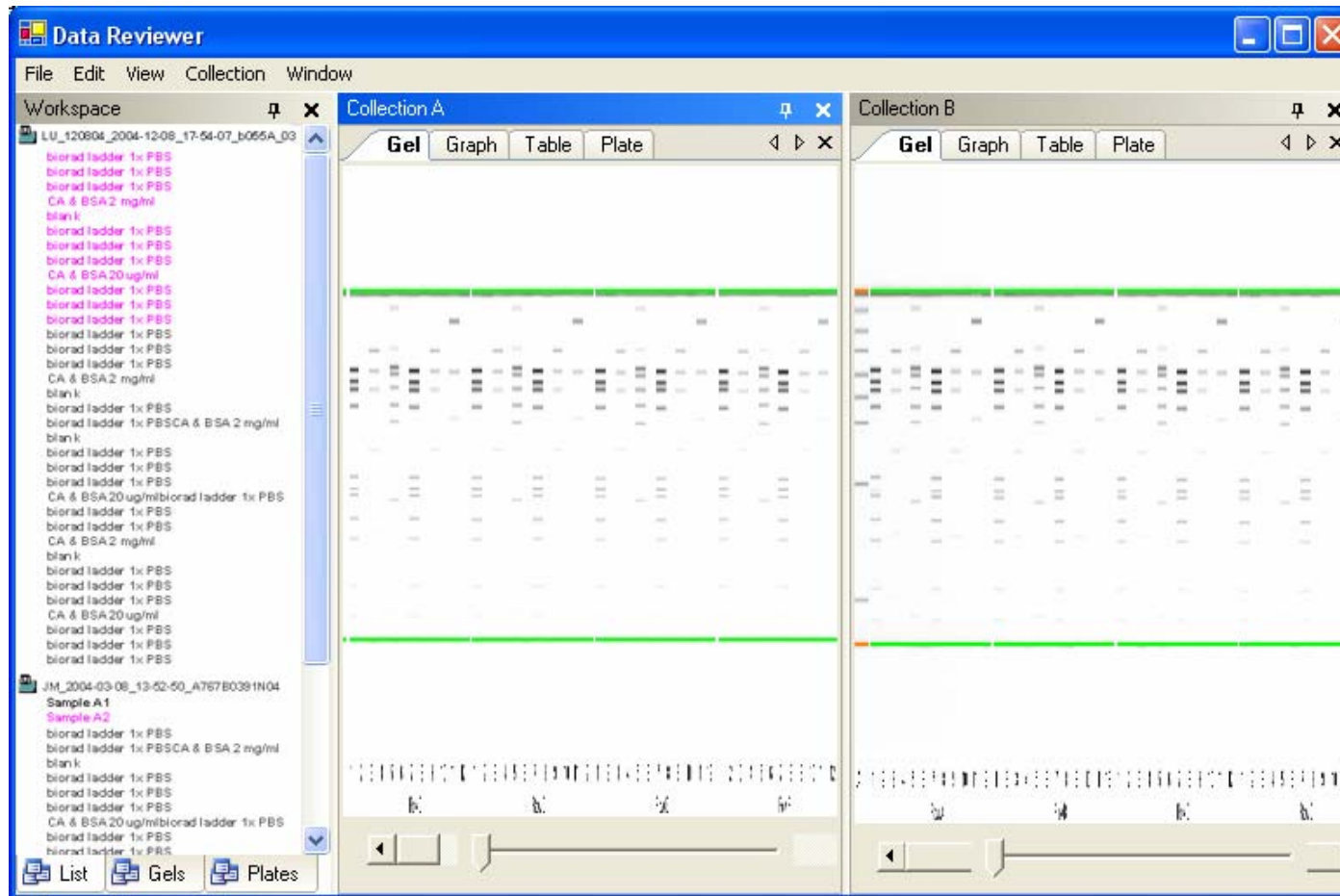


Scroll

Zoom

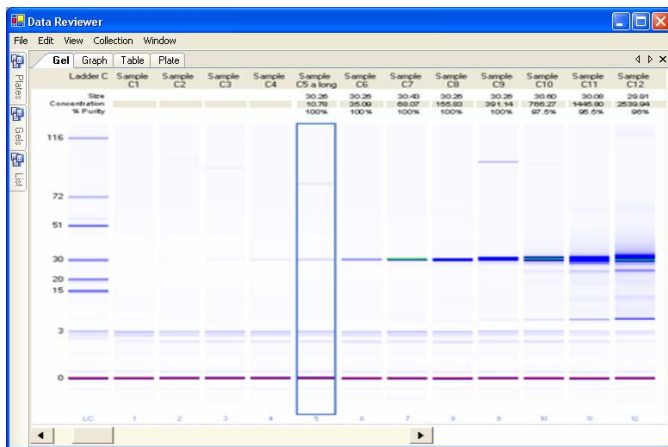
Zoom out to show 100+ lanes

Data Viewer Features: Viewing Multiple Collections

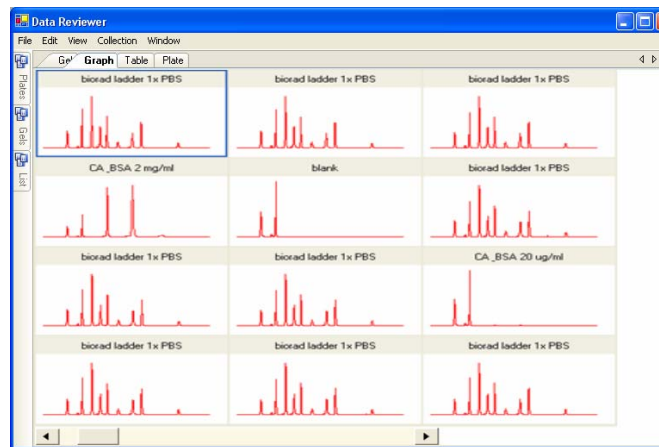


Collection A and B may be viewed side by side with synchronized scrolling.

Data Viewer Features: Collection Views



Gel



Graphs

Peak	Mig Time(secs)	Height	Corr.Area	Size(KDa)	Rel.Conc.(ug/ml)	%Total
1	23.80	288.21	514.51	1.8131		
2	27.53	33.63	44.80	4.9820		
3	29.10	603.77	580.68	7.0665		
4	32.50	877.90	933.09	13.39	723.32	35.7
5	35.58	361.96	454.95	21.48	352.67	17.4
6	37.98	533.04	427.88	29.46	331.63	16.4
7	41.90	94.85	121.85	45.67	94.46	4.7
8	47.15	246.84	264.10	73.25	204.72	10.1
9	50.25	443.85	335.43	92.43	260.02	12.8
10	63.48	81.57	73.88	193.15	57.27	2.8

Table

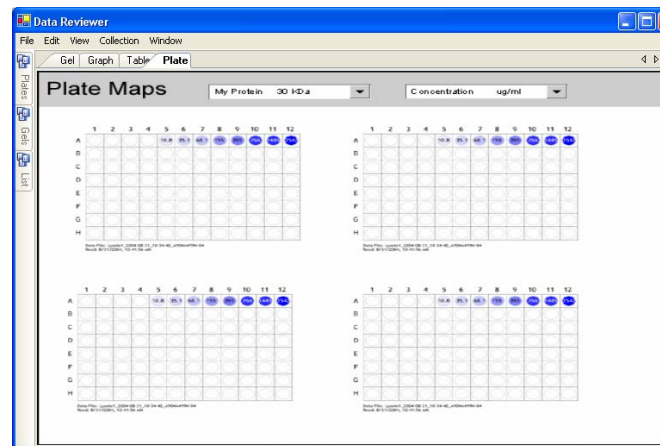


Plate Maps

Data Viewer Features: Workspace View

3 View Options

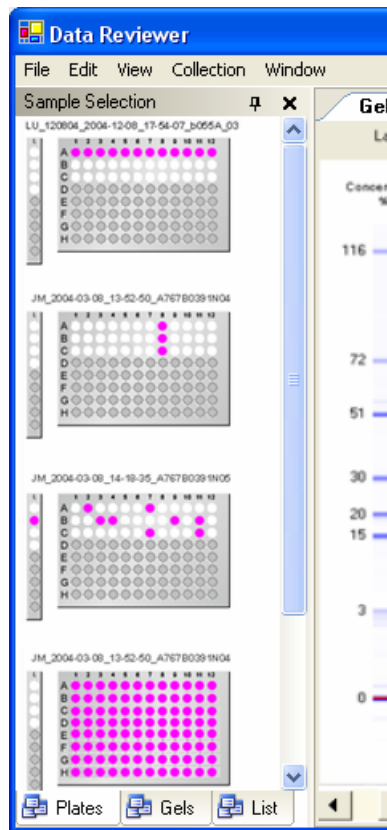
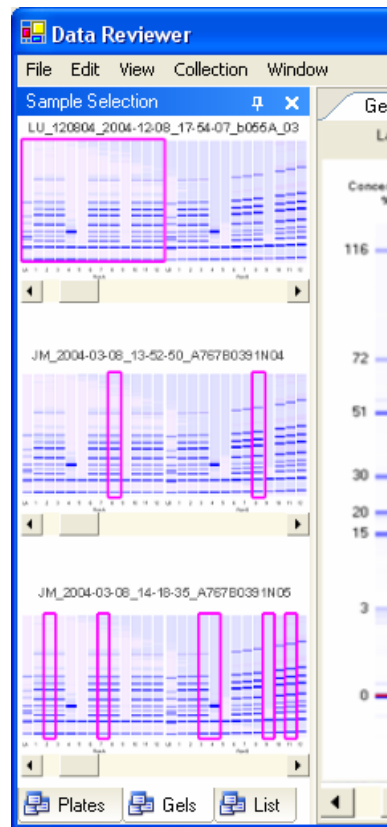
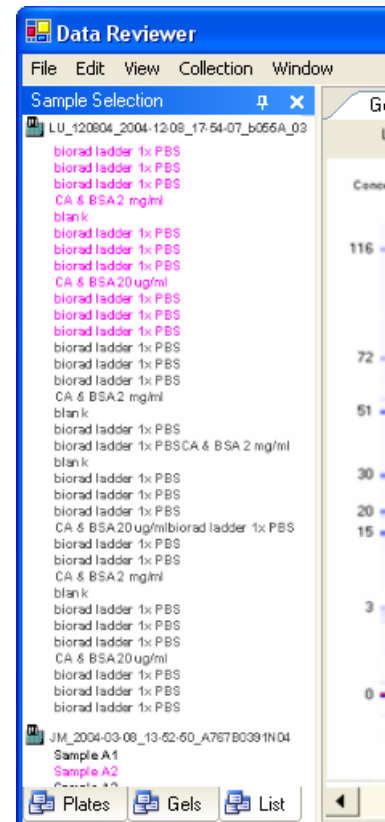


Plate view



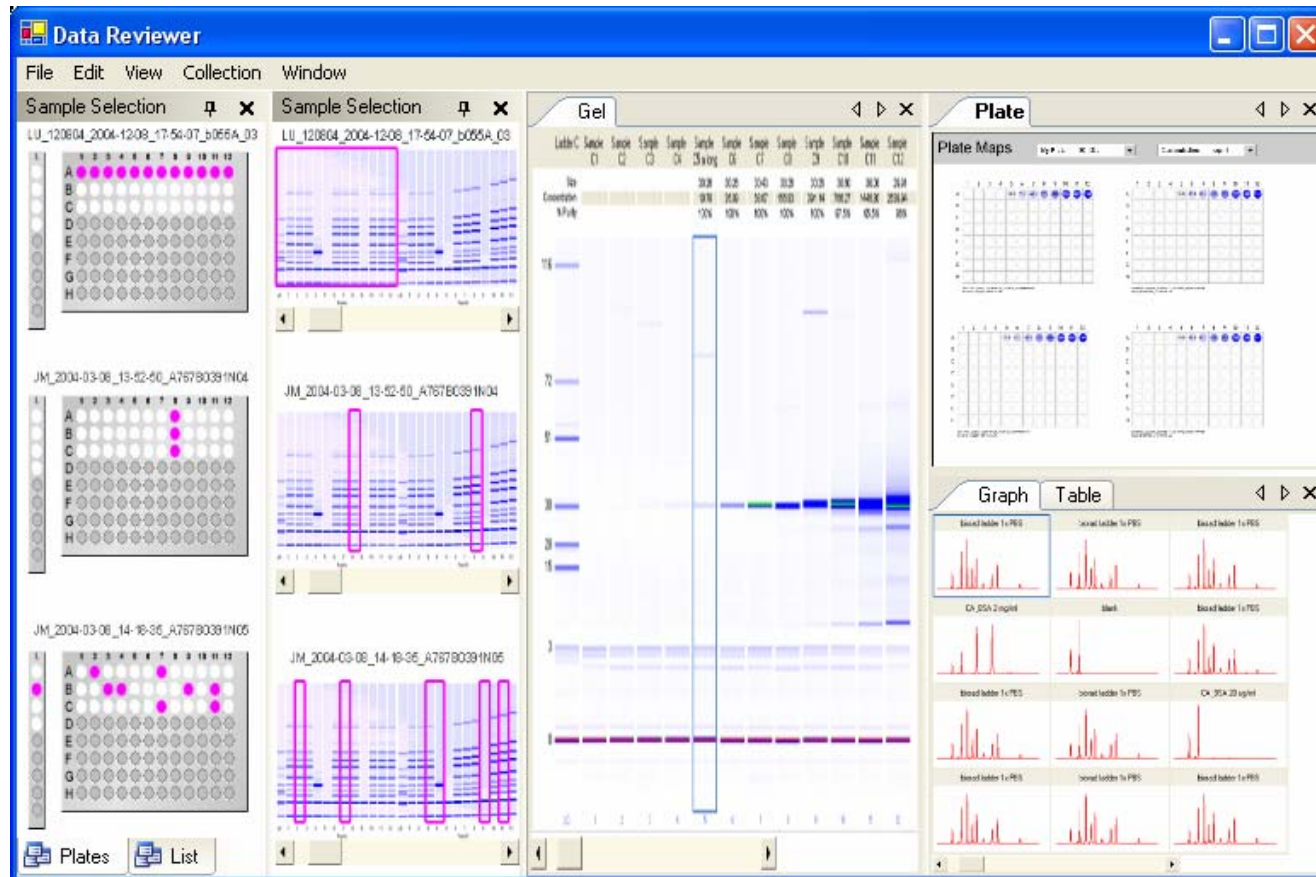
Gel view



List view

Data Viewer Features: Layout Options

- User can rearrange the window layout
- Save the workspace layout for future collection viewing
- Save analyzed and raw data as part of workspace





Caliper
LifeSciences