

LC90 Ad

Caliper Life Sciences'
LabChip® 90 System
now does **Automated**
Protein Analysis.



Quick and simple analysis.
Consistent, hassle-free results
without sacrificing resolution,
sensitivity or convenience.

- Automatic sampling,
electrophoresis and reporting
- See results in just 30 seconds
per sample
- 96-well plates analyzed in
about an hour
- Run just a few samples,
or hundreds at a time

Now you know.
Contact Caliper today.
www.caliperLS.com



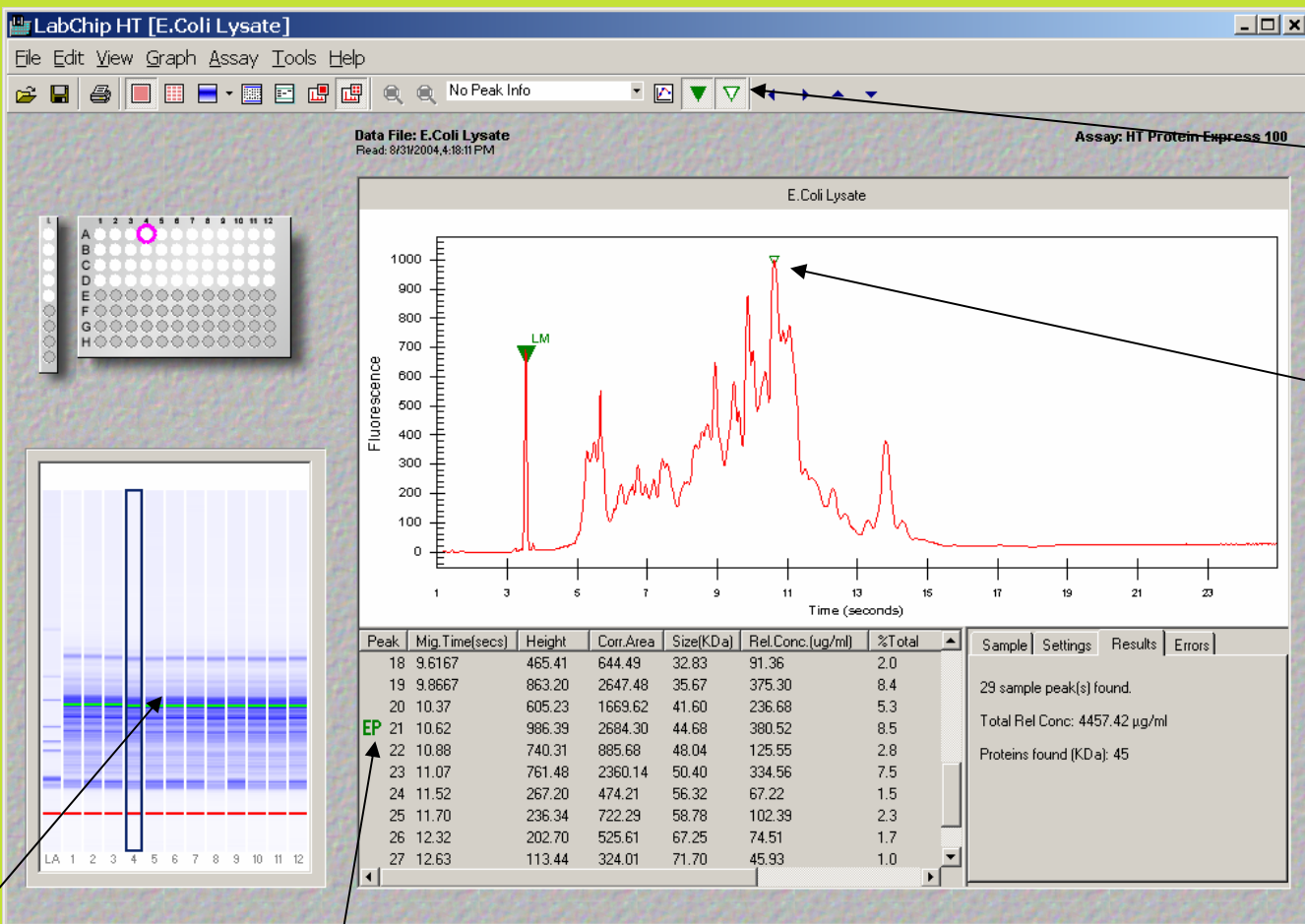
did you know?...

Protein Express Assay



did you know?...

Expected Protein Feature



Click here to view expected proteins

Expected proteins identified on egram

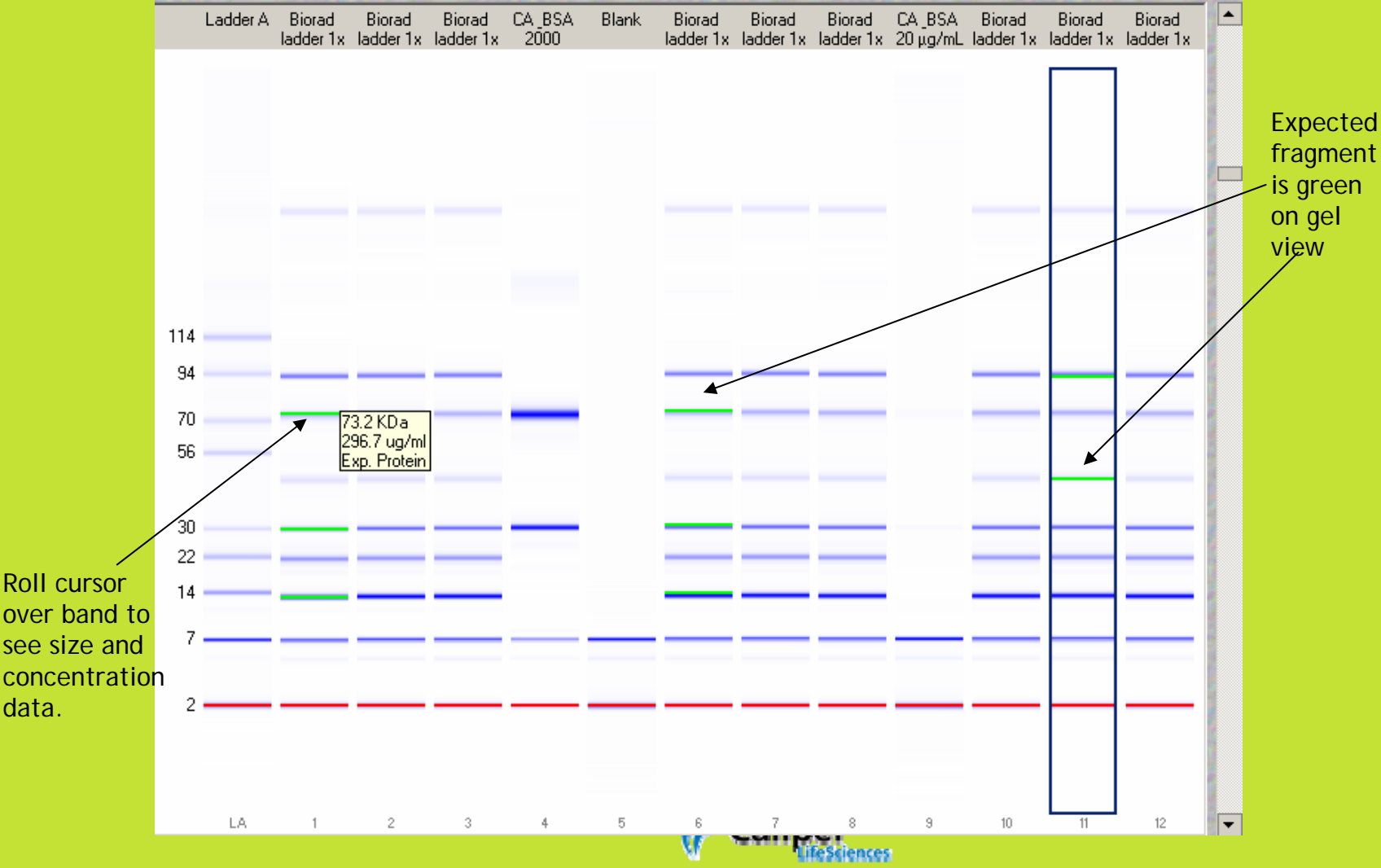
Expected proteins are green on gel image

'EP' for expected protein designation on results table



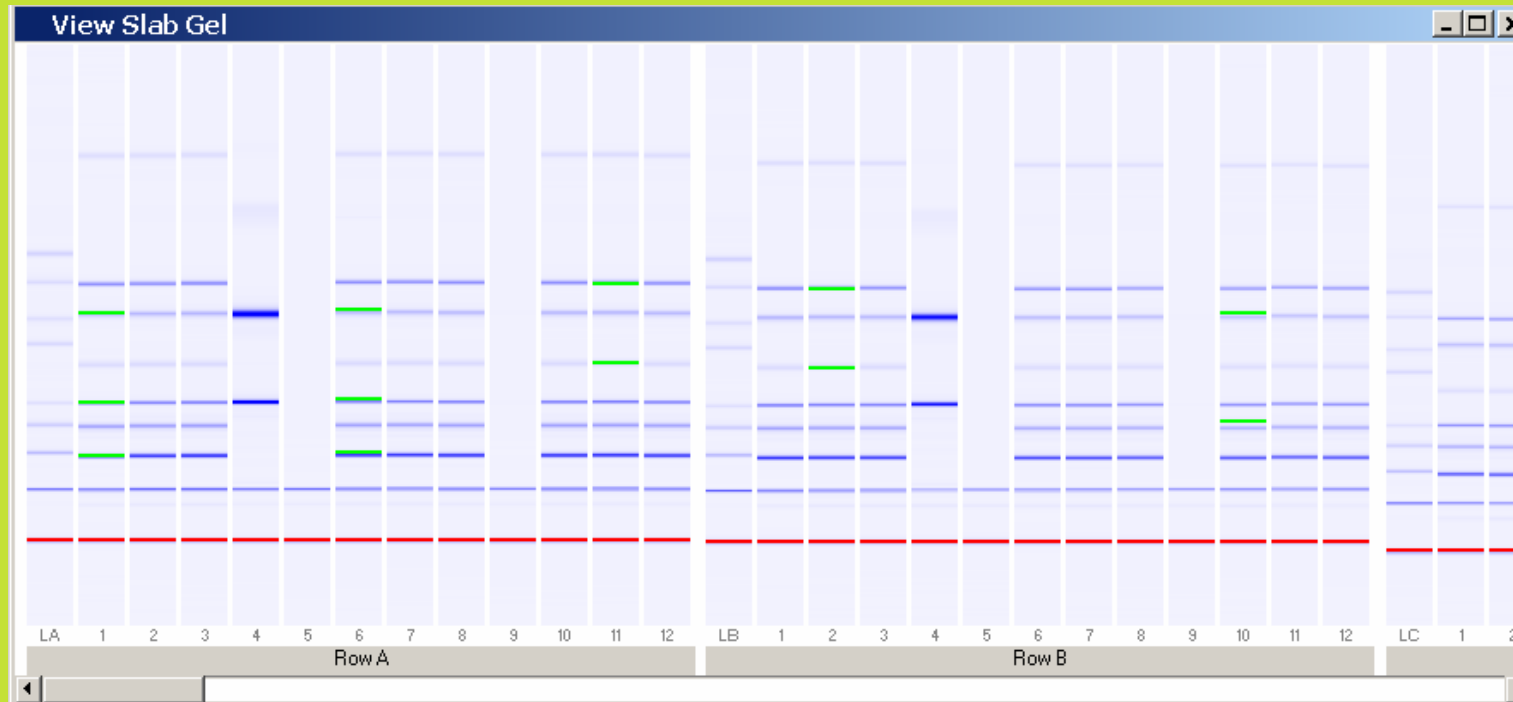
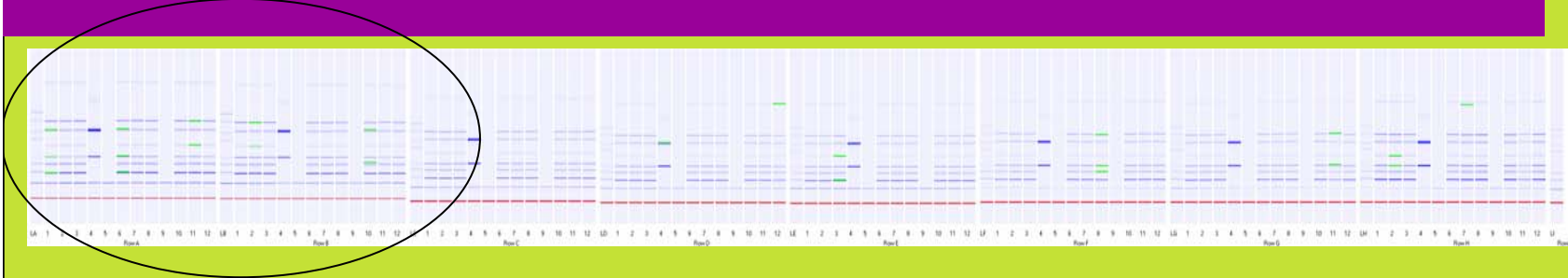
did you know?...

Expected Protein Feature – Gel View



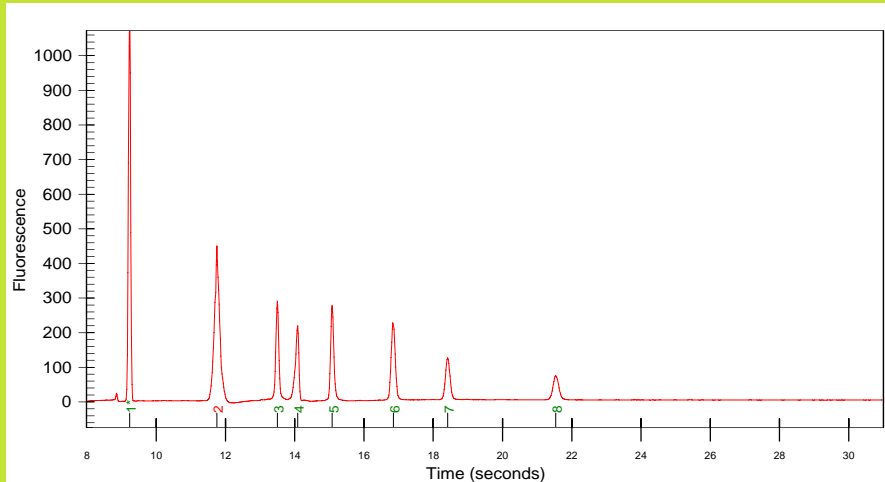
did you know?...

Expected Protein Feature – Slab Gel



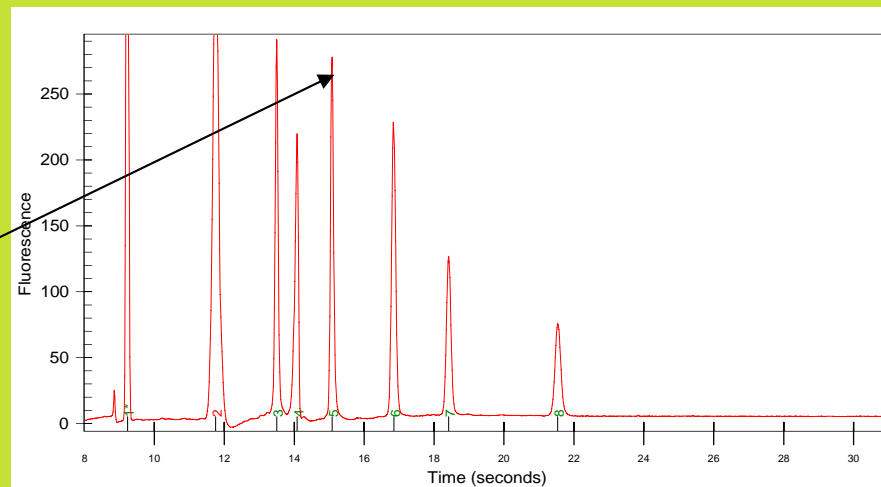
did you know?...

Limit Scaling to Samples Feature



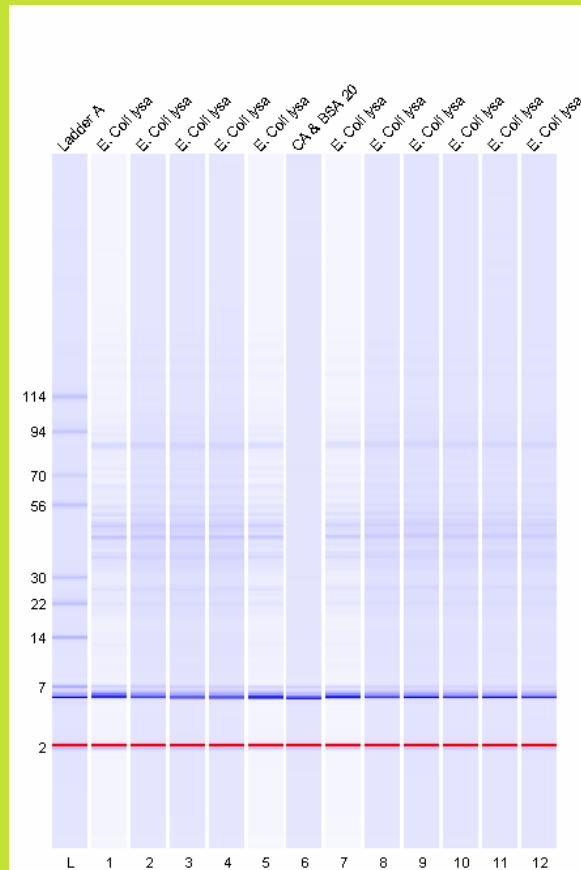
Standard Scaling

Scale to Samples on - marker and system peaks are ignored and well is scaled to largest sample peak

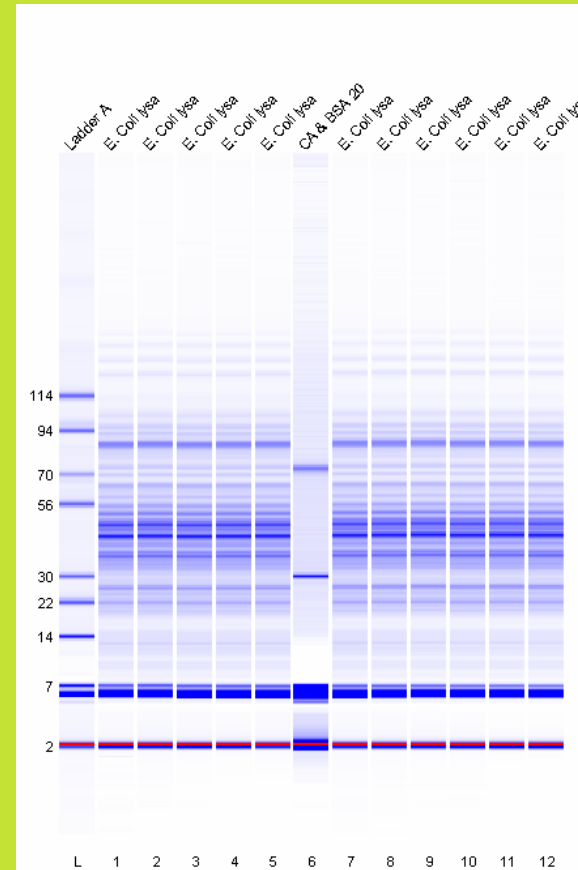


did you know?...

Limit Scaling to Samples – Gel View



Standard Scaling



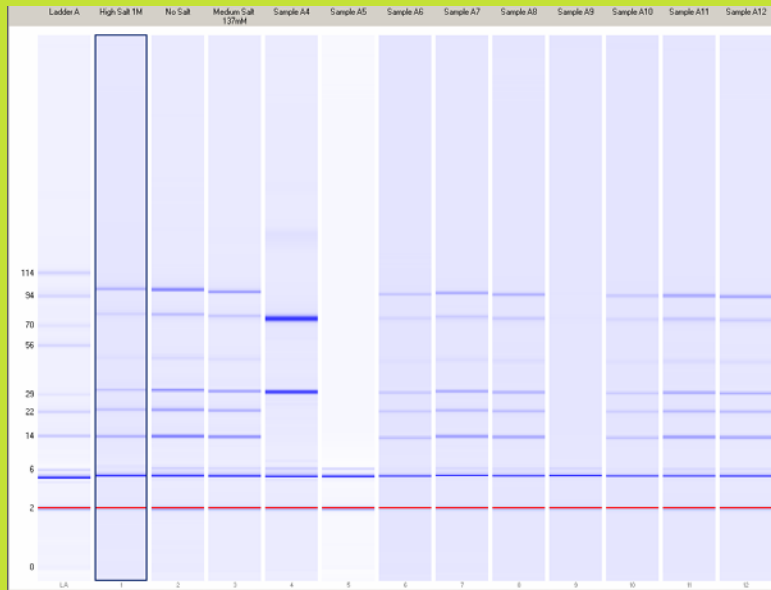
Scale to Samples



did you know?...

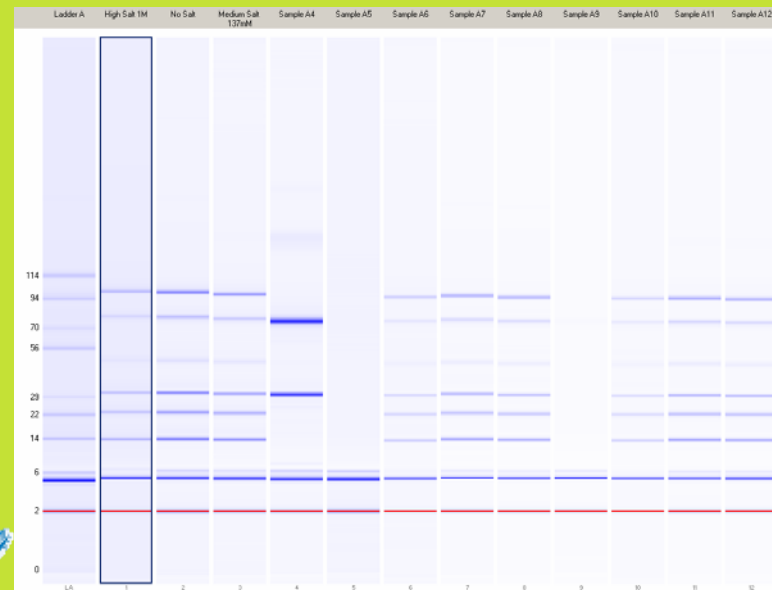
Baseline Subtraction – Varied Salt Plate

did you know?...

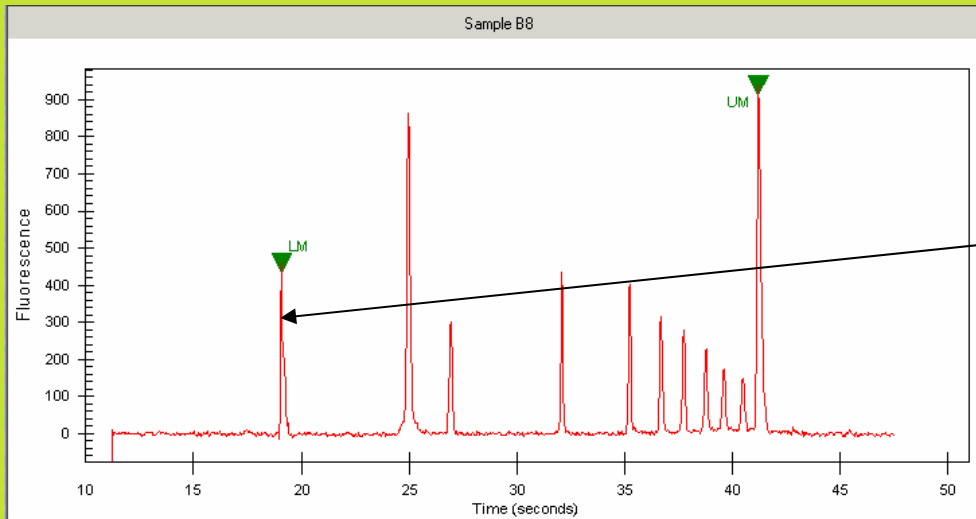


Default - Zero Baseline

Baseline Subtraction On

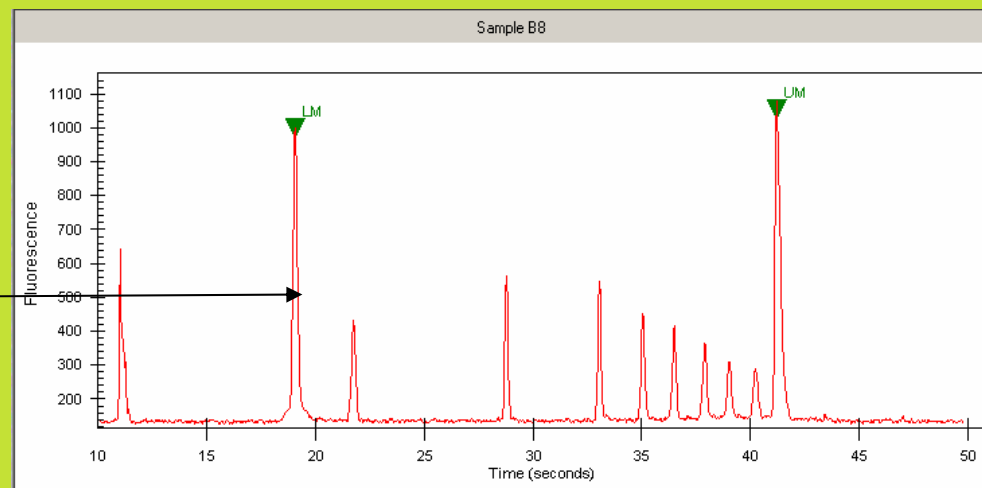


Marker Finding



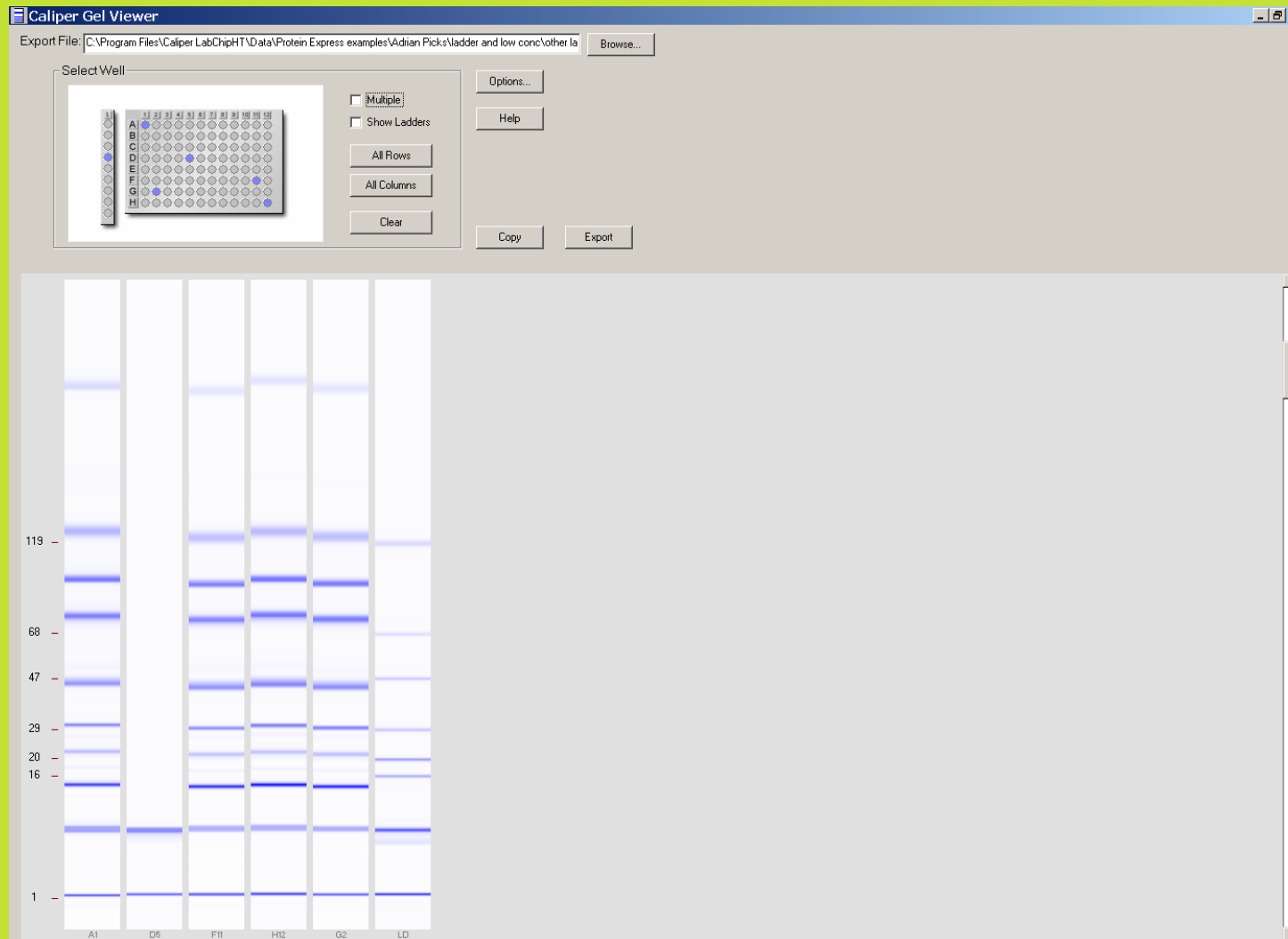
LabChip HT 2.4 Release -
Miscalls spike as lower marker

LabChip HT 2.4.1 Beta
Calls marker correctly



did you know?...

Gel Viewer



did you know?...

Protein Express Assay Specs

Type	Specification
Sizing Range	Protein 100 Assay: 14 - 100 kDa Protein 200 Assay: 14 - 200 kDa
Sizing Accuracy*	± 20%
Resolution*	± 10% difference in MW across the sizing range, 50% valley Resolution is comparable to a 10 cm 4-20% SDS-PAGE gel
Linear Dynamic Range*	2.5 - 1000 ng/μL
Relative Concentration CV*	30% up to 120 kDa relative to the ladder
Sensitivity*	2.5 ng/μL (12.5 ng) Carbonic Anhydrase Sensitivity is equivalent to mid range colloidal Coomassie stain
Analysis Time per Sample	Protein 100 Assay: 28 seconds/sample Protein 200 Assay: 34 seconds/sample
Chip Lifetime	3 96 well plates
Analysis Time Per Plate**	96-well plate : P100 Assay ~ 1 hr P200 Assay ~ 1.25 hr
Maximum Salt Concentration	1M NaCl

* For samples in PBS



did you know?...

Value Propositions

- Data Quality
 - Highly reproducible results across chips, users, instruments and most importantly **time** – gel results are variable
 - Results are reliable last month, today and next year – customers can be secure in decisions made from LC90 data
 - Results can be shared and compared between experiments, multiple groups and multiple sites
 - **More** data at end of process than with gels